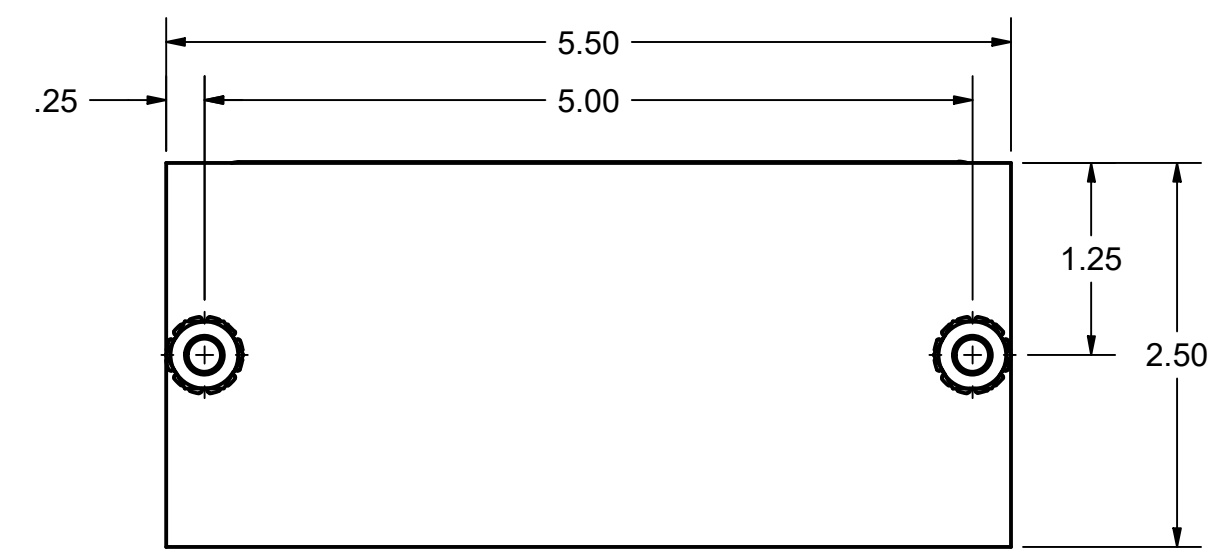
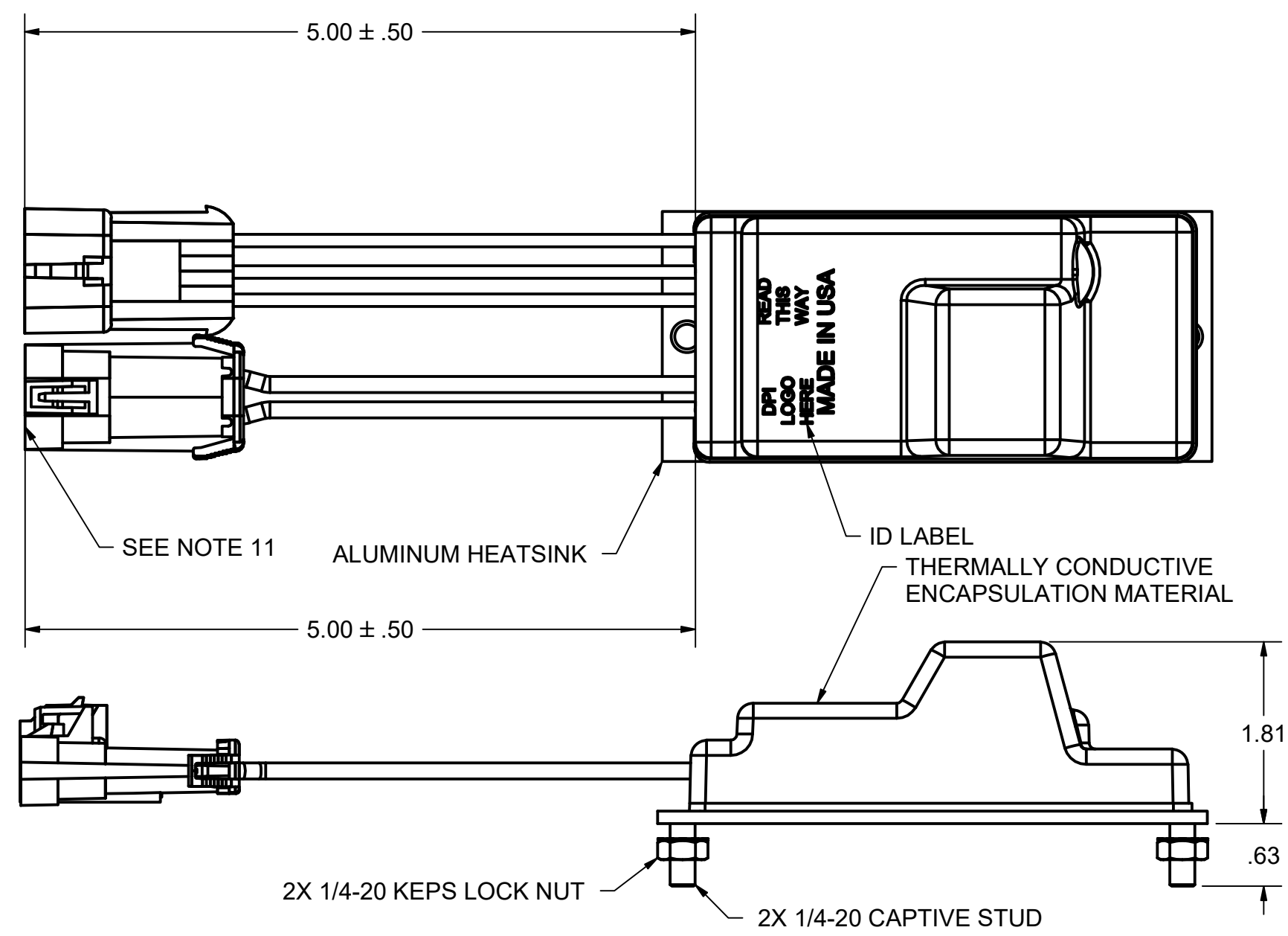
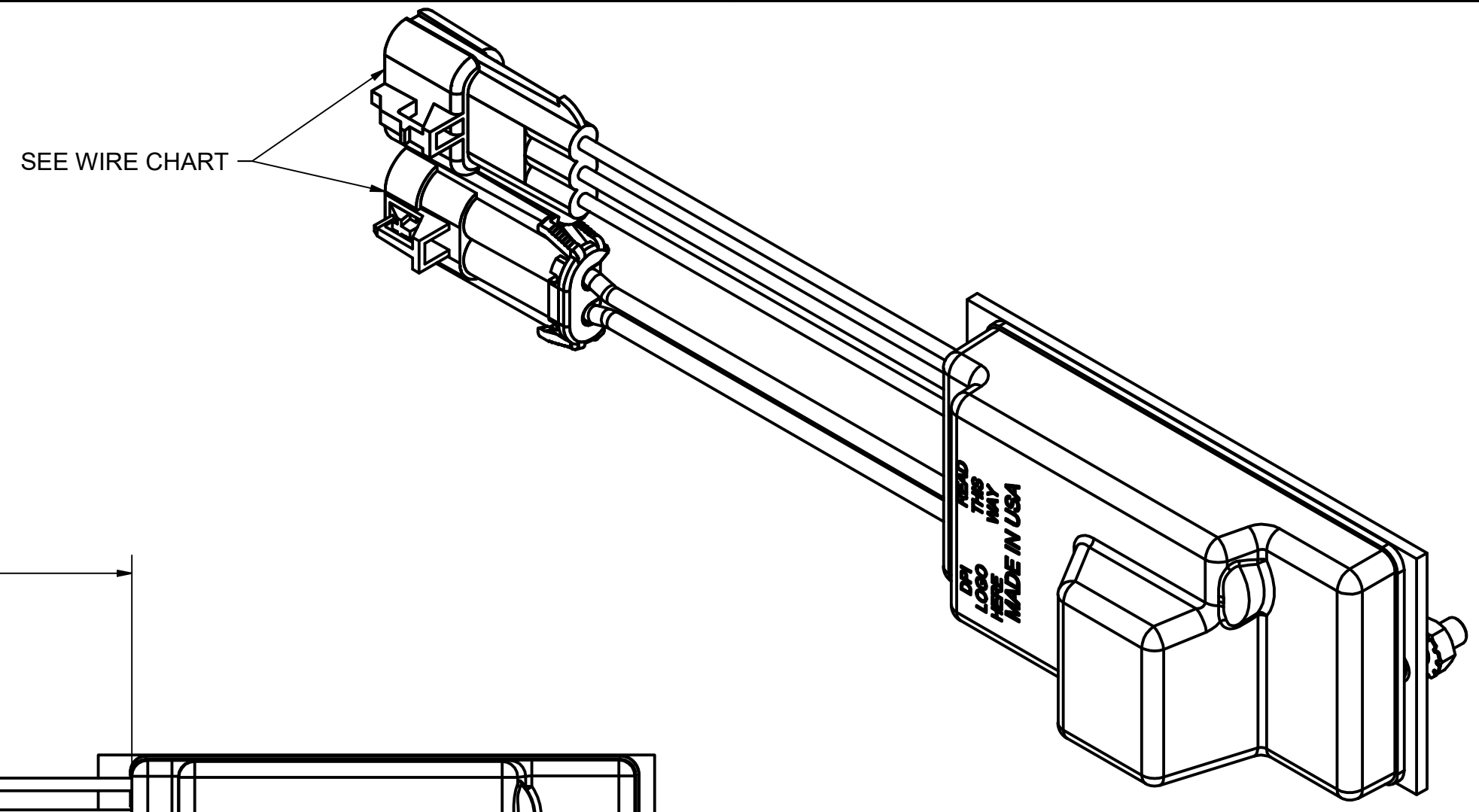


REV	REVISION DESCRIPTION	APPROVED	DATE
1	DELETED MEETS UL583 FROM NOTE 8 & UPDATED ENCP	TAM	12/19/2016
2	UPDATE SPECIFICATIONS AND WIRE LOCATIONS	TDT	1/19/2023

SPECIFICATION LIST:

- NOMINAL RATING:**
I/P VOLTAGE: 60-72 Vdc
I/P CURRENT: 7.0 Adc
I/P PROTECTION: REVERSE BATTERY CONNECTION
ACTIVE CURRENT AND POWER LIMIT
- INPUT RATING:**
UVL= 50Vdc - ON, 43Vdc - OFF.
OVL= 105 Vdc - OFF, 96 Vdc - ON.
I/P VOLTAGE OPERATIONAL - 50Vdc TO 105Vdc.
I/P CURRENT: 7.0 Adc @ 50Vdc
- OUTPUT:**
O/P VOLTAGE: 12.5 ±0.5 Vdc
EFFICIENCY: > 93%
O/P PROTECTION: SHORT CIRCUIT / OVER CURRENT: 40 Adc
- CONTROL:**
IGNITION KEY TURN ON: B+ (BATTERY POSITIVE)
- THERMAL PROTECTION:**
THERMAL SWITCH: 105° C, INTERNAL THERMISTOR, SELF RECOVERY
- ENVIRONMENTAL:**
OPERATING TEMPERATURE: -40°C TO +50°C, UNRESTRICTED AIRFLOW
STORAGE TEMPERATURE: -40°C TO +105°C AMBIENT
- MECHANICAL:**
WEIGHT: (LBS/KG): 2.0 LBS ±2 OZ, (.91 KG APPROX.)
VIBRATION: MEETS SAE 1211, ASTM-D-4728 TRUCK SPECTRUM
SHOCK: MEETS SAE 1211, ASTM-D-4728 TRUCK SPECTRUM
- SAFETY:** MEETS UL-1012 (POWER UNITS OTHER THAN CLASS-1.
FULLY ISOLATED OUTPUTS FROM INPUTS & CHASSIS
- EMI:** GENERAL PURPOSE EMI FILTERING I/P & O/P
- MOUNTING REQUIREMENTS:**
HEAT SINKING: 0.5°C/W MAX HEATSINK TO AIR THERMAL RESISTANCE
TORQUING: 60 IN-LBS MAX
INTERFACE: OPTIONAL THERMAL GREASE OR THERMAL PAD
- DELPHI 3 PIN PLUG:**
MANUFACTURER P/N (HOUSING): 15300003
MANUFACTURER P/N (PIN): 12129497
MANUFACTURER P/N (SEAL): 15324980
MANUFACTURER P/N (LOCK SECONDARY TPA): 15300015
- DELPHI 2 PIN PLUG:**
MANUFACTURER P/N (HOUSING): 12065863
MANUFACTURER P/N (PIN): 12065197
MANUFACTURER P/N (SEAL): 12048443
MANUFACTURER P/N (LOCK SECONDARY TPA): 12059897



NOTE:
1: ELECTRICAL SPEC TOLERANCES: ±3%

WIRE CHART		
WIRE COLOR	WIRE PIN	PCB LOCATOR
BLUE 14 AWG WIRE	+ BATTERY	E2
WHITE 16 AWG WIRE	IGNITION	E6
YELLOW 14 AWG WIRE	- BATTERY	E3
RED 10 AWG WIRE	+ OUTPUT	E4
BLACK 10 AWG WIRE	- OUTPUT	E5

PROPRIETARY AND CONFIDENTIAL
This document and the information contained within is the property of Diversified Power International L.L.C. (DPI) and it contains Confidential and Proprietary Information which may not be copied into or onto any other form or format, and may not be disclosed to any third party; and may not be used for any purpose that is contrary to its intended purpose and use without the express written consent of DPI.

TOLERANCES (UNLESS NOTED): (INCHES [MILLIMETERS]): 3 PLACES: ± .005 [.13MM] 2 PLACES: ± .03 [.76MM] ANGULAR: ± 1°	SIGNATURES	DATE	TITLE
	DRAWN: TAM	3/20/2013	60/72V, 30A, DC - DC CONVERTER
THIRD ANGLE PROJECTION 	CHECKED: TAM	3/20/2013	DIVERSIFIED POWER INTERNATIONAL, LLC 414 CENTURY COURT PINEY FLATS, TN 37686 PHONE: 423-538-9002
	APPROVED: TDT	3/20/2013	
CAD DRAWING: DO NOT SCALE	NEXT ASSY: N/A	USED ON: N/A	SIZE DWG NO C 12-13F030T55-01
	SHEET 1 OF 1		REV 2